

Falling Branch Shell Building

Corporate Drive, Christiansburg, VA



105,000 SF to 315,000 SF Build-to-Suite Facility Along Interstate 81 in Virginia

PROPERTY HIGHLIGHTS:

- Facilities Corporation of America, the developer, has build-to-suite for lease or purchase options ranging from 105,000 SF to 315,000 SF
- Fast Track Option: Civil and architectural plans for a 105,000 SF building, expandable to 205,000 SF, are complete. Facility can be constructed within 6 months of executing a construction contract (see reverse side).
- Falling Branch Corporate Park has direct access to I-81 - a major East Coast trucking route, via Exit 118A and is within 30 miles of I-81/I-77 Interchange
- Virginia Tech, a top 50 research university, is located within five miles
- Building will have excellent visibility from I-81 (40,000+ vehicles per day)

FAST TRACK BUILDING SPECS:

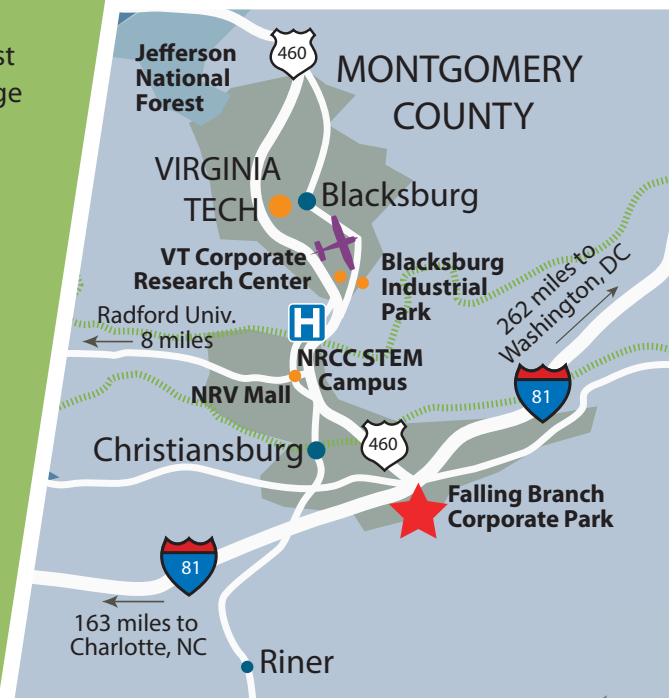
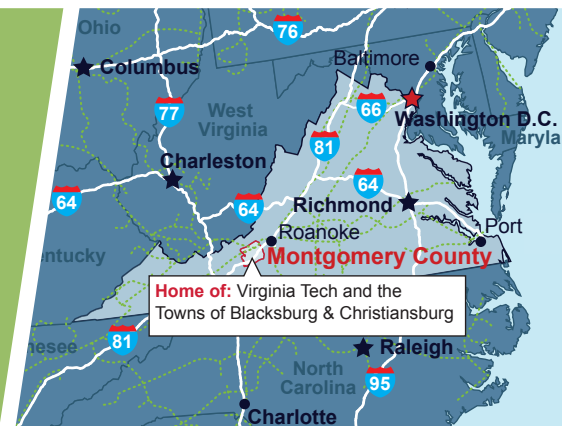
- Building Size: 105,000 SF
- Expansion Pad: 100,000 SF
- Dimensions: 350' x 285'
- Walls: 12' Precast Panels on Pre-Engineered Metal Building
- Floors - 6" Reinforced Concrete
- Roof: 24 Gauge Standing Seam
- Ceiling: 24' clear, exposed Steel with 4" Insulation
- Bay Size: 50' x 50'
- Dock Doors: Five 8' x 10'
- Overhead Door: One 12' x 16'

SITE SPECIFICATIONS:

- Lot 2/2A - 20.7 Acres (Graded Pads)
- Zoning - I-2, General Industrial

PARK INFRASTRUCTURE:

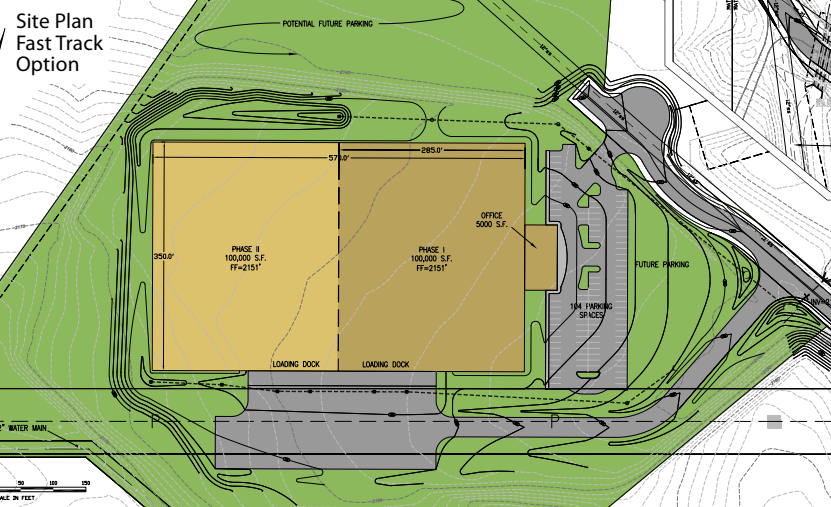
- Electric: Redundant 138 Kv Transmission Line with Substation (20 MVA Expandable to 100 MW)
- Water: 12" water line with 1 million gallon water tank (500,000 GPD)
- Waste Water: 12" line (1.2 M GPD)
- Natural Gas: Energy, 4" line
- Broadband: Redundant Fiber



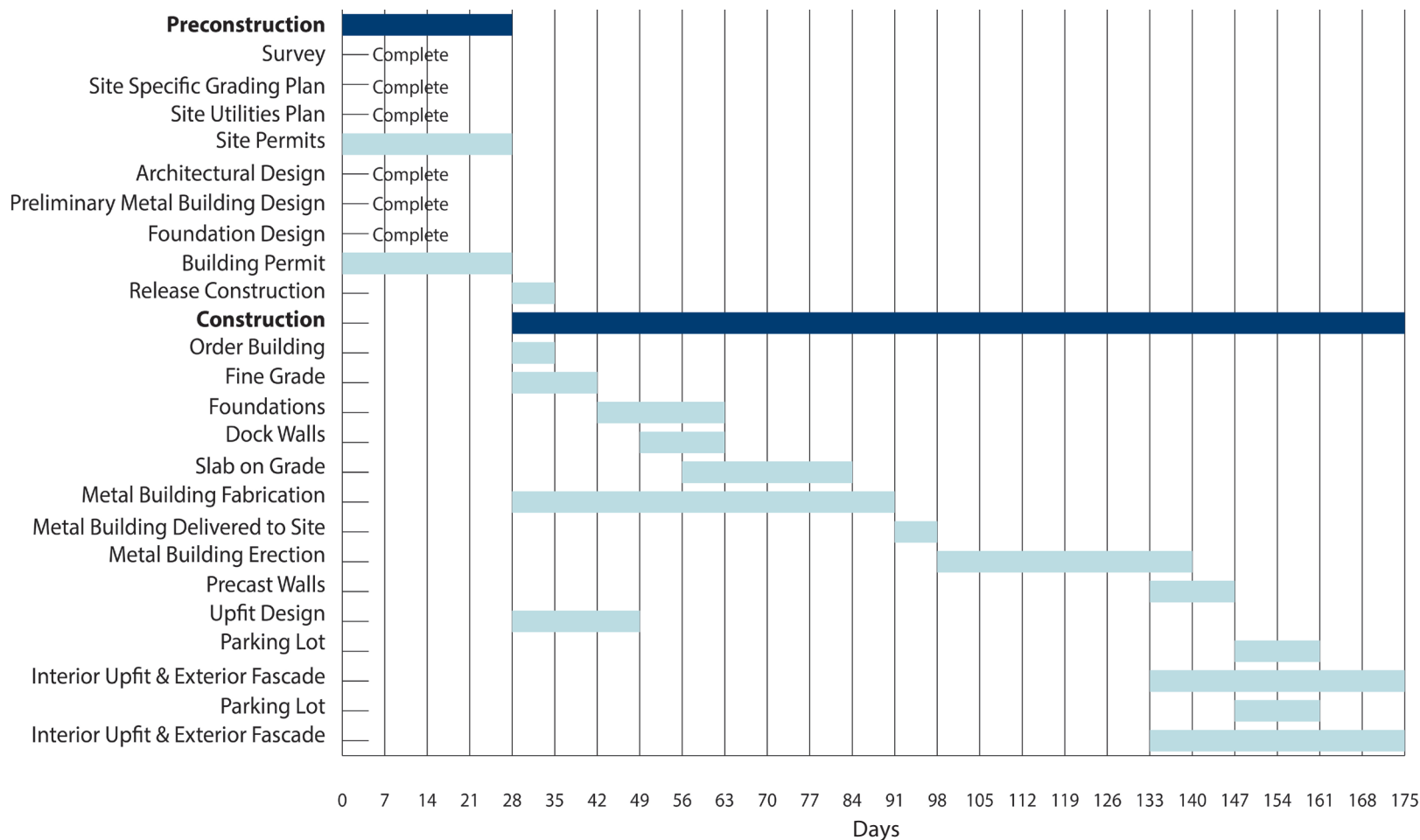
MONTGOMERY COUNTY, VIRGINIA | DEPARTMENT OF ECONOMIC DEVELOPMENT

Toll Free: (866) 270-9185 | 755 Roanoke St, Suite 2H | Christiansburg, VA. 24073

Website: YesMontgomeryVA.org | Facebook and Twitter @ YesMontgomeryVA



Six-Month Development Schedule - 105,000 SF Fast Track Option



MONTGOMERY COUNTY, VIRGINIA | DEPARTMENT OF ECONOMIC DEVELOPMENT

Toll Free: (866) 270-9185 | 755 Roanoke St, Suite 2H | Christiansburg, VA. 24073

Website: YesMontgomeryVA.org | Facebook and Twitter @ YesMontgomeryVA